

Chris Pye Auriou Lettercarving Tools



**Learn to Carve.
Learn to Carve Better!**

Join Chris Pye at WoodcarvingWorkshops.tv



Chris Pye/Auriou Lettercarving Tools



Congratulations!

You've made an excellent choice in buying these Auriou Lettercarving Tools. The craftsmanship from Forge de St Jeury is not to be surpassed. I trust you'll enjoy using them as much as I do. I've put together these notes to help you get started.

Remember: there is no one carving tool, or lettering set, that fits all alphabets (fonts). The Auriou Lettering Set is designed incise the alphabet drawn out in the following pages with my style of slicing cuts. In order to keep the gouge set down to 7 tools, I have used both the fishtail gouge (normally used for serifs) and fishtail chisel (also used for serifs but can be seen as a really flat gouge) within the body of the letters.

I have included a few notes (shown in red numerals e.g. 5¹⁰, where 5 is the Sheffield List Number and 10 is the width in mm.) about which tools I find work best for which curves.

Lettercarving is very skilful work. Take your time and practise your letters on a sample board before attempting a final carving. You can find more information and see me using slicing cuts to carve letters by going to my instructional website: WoodcarvingWorkshops.tv or in my book: '*Lettercarving in Wood - An Introduction*' (GMC Publications).

All the best with your lettering!
Cheers,

Chris Pye



NB: This document, including the amended font, is copyright: You may freely use the alphabet for your carving work and you may freely print this document and share it with others.

You must not change anything in this document, charge for it, or reprint this version of the font elsewhere without my express permission.

The complete set consists of 14 tools:

The **Auriou 7-piece lettering allongee chisel set** will incise the straight elements in any alphabet, including the one here.

The **Auriou 7-piece set of allongee gouges**, which includes a fishtail gouge and chisel, are designed and made to slice the curves of the 45mm Roman alphabet drawn out below. Different curves in another font, or a different size letter, may very well require different gouges.



Using the Alphabet [A modified version of a Trajan typeface]

1. Print out the alphabet pages in a good, sharp quality and enough times so you have every individual letter you need.
2. Check that the height between header and footer lines is 45mm. If not, enlarge or reduce the size until this measurement is correct.
3. Draw on paper a base line for reference and arrange your individual letters by eye, cutting and pasting for correct spacing.
4. Make a final copy and fix to your board with 'Photomount' or similar adhesive.
5. Carve accurately through the paper into the wood. Remove the paper with White Spirit (Mineral Spirits) and check the carved outlines.



Some Notes on Sharpening

These tools, as all carving tools, come 'factory sharpened': sharpened by the blacksmith, not a woodcarver. Remember, *all* woodcarving tools need to be 'commissioned': the profile shaped correctly, the edge sharpened for maximum efficiency and maintained just so. These tools are no exception. Anything less and your carving, and temper, will suffer.

You will find more about woodcarving tools and how to sharpen them in my publication, 'Woodcarving Tools, Materials & Equipment' Vol.1, and on the Woodcarving Workshops.tv website.

Here are a few pointers on how I normally sharpen my carving tools:

1. **Chisels and gouges:** Keep the edges square, sharp and at right angles to the axis, preserving the corners

Note: Some carvers allow the edges to be a little rounded, protruding more in the centre ('nosed'). You might like to experiment with this profile.

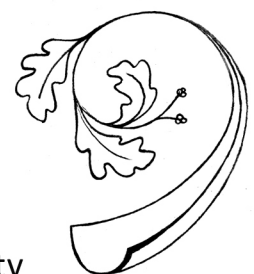
2. **Chisels:** Sharpen uniformly on both sides with bevels of around 15°
3. **Gouges:** Outside bevel around 15-20°; inside bevel around 5-10°



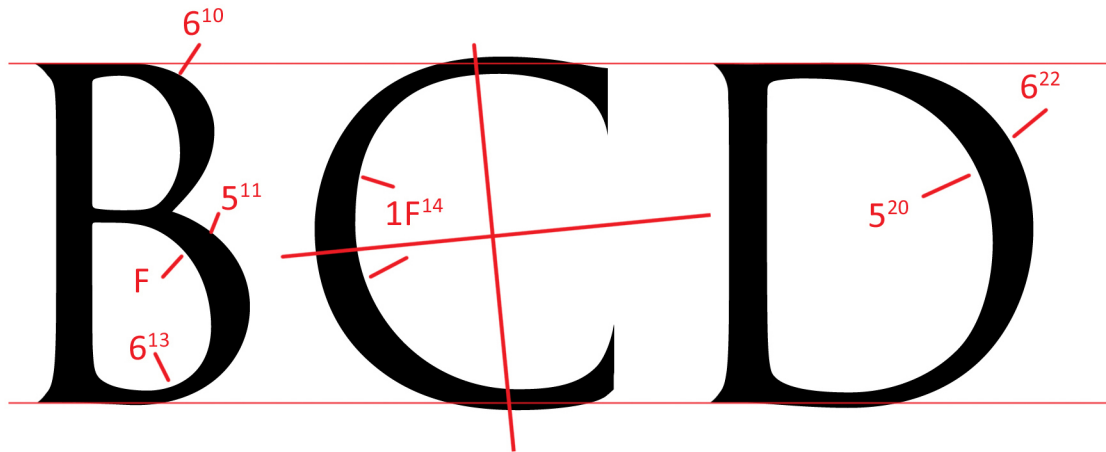
Acknowledgements

Many thanks to Mike Hancock from Classic Hand Tools for having the entrepreneurial imagination to bring these carving tools into being; to Michel Auriou and the blacksmiths at the Forge de Saint Jeury (www.forge-de-saint-juery.com) for their care in making them; and to Stewart Roberts for his graphics skills.

Learn to Carve. Learn to Carve Better!
Join Chris Pye at WoodcarvingWorkshops.tv

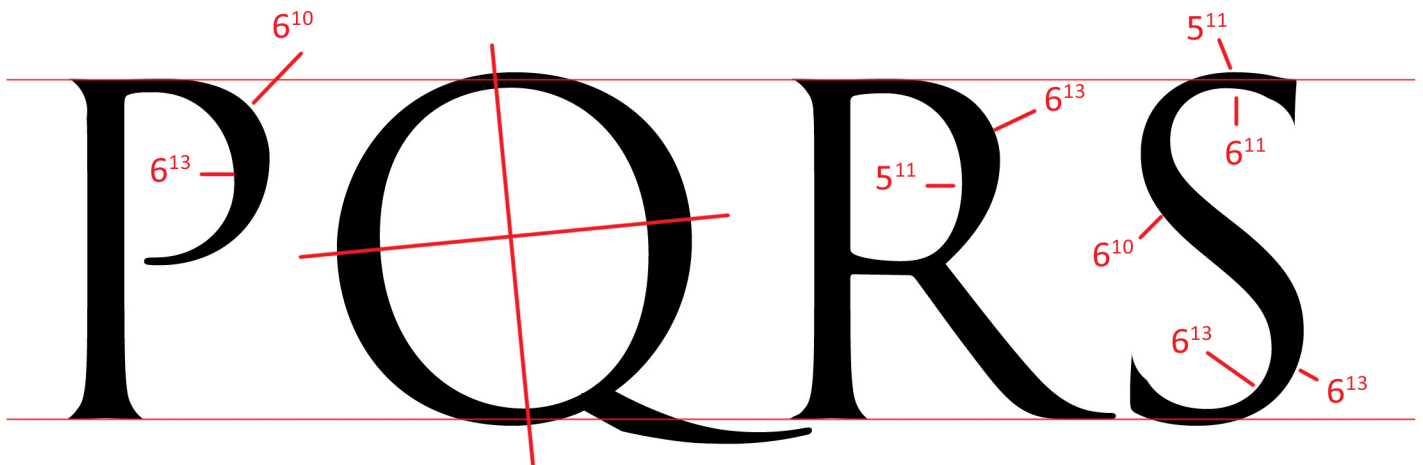


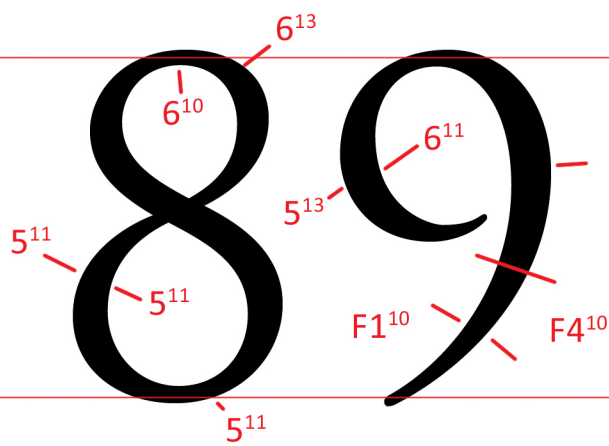
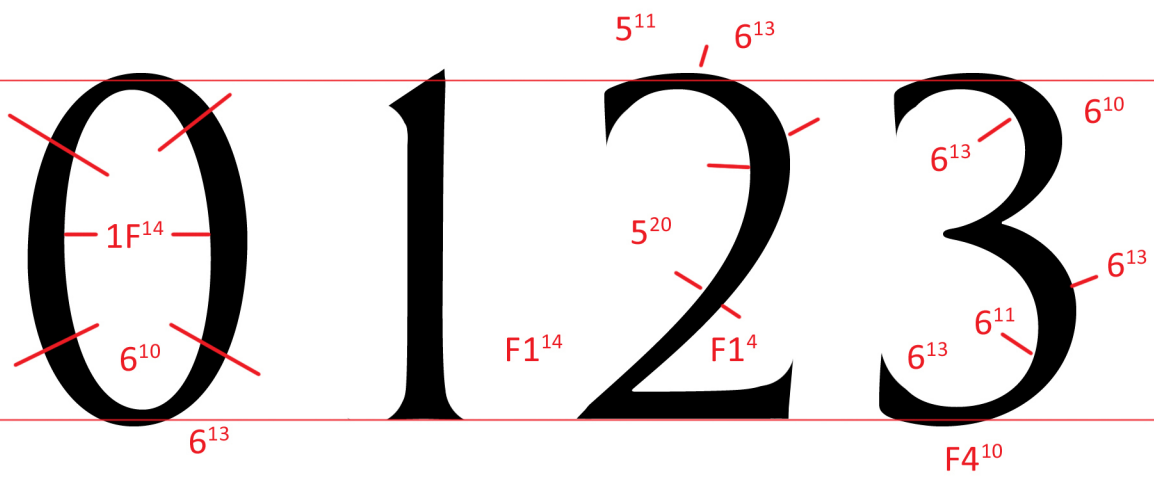
Tool Suggestions



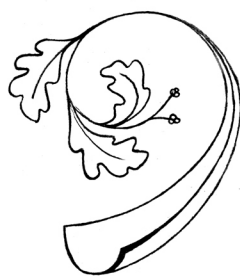
F = Fishtail Gouge

1F = Fishtail Chisel





Type height
45mm



A B C D

E F G H

I J K L

Type height
45mm

M N O

P Q R S

T U V

W X Y

Type height
45mm

Z &

0 1 2 3

4 5 6 7

8 9

Type height
45mm

