



Article 505-330 Alu-Line Precision Bevel

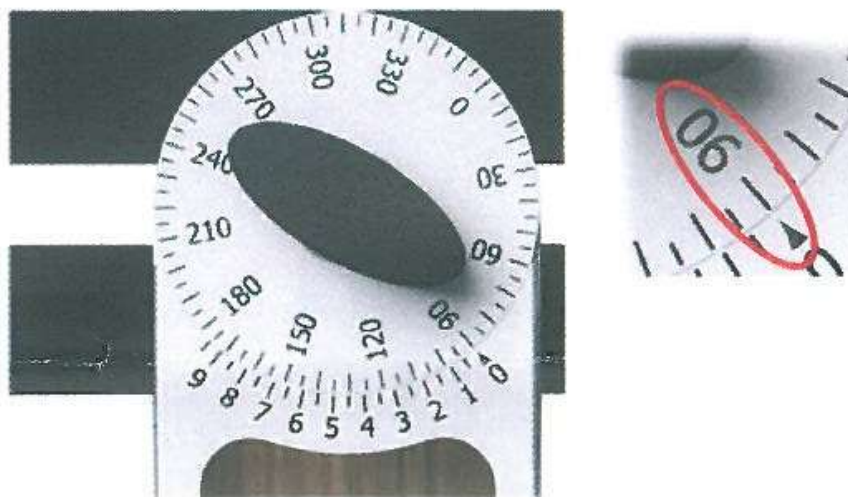


A precision bevel with angle scale which can read or set 360° in ½ degree increments.

The angle scale is divided into 5° increments. For faster reading the longer lines indicates 10° increments.

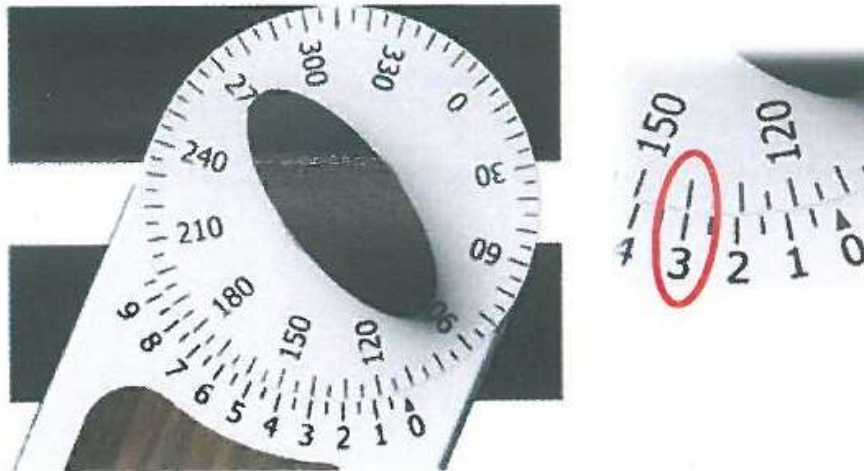
Degrees which are divisible by 5 are set/read at the zero on the vernier scale.

Setting example 90°



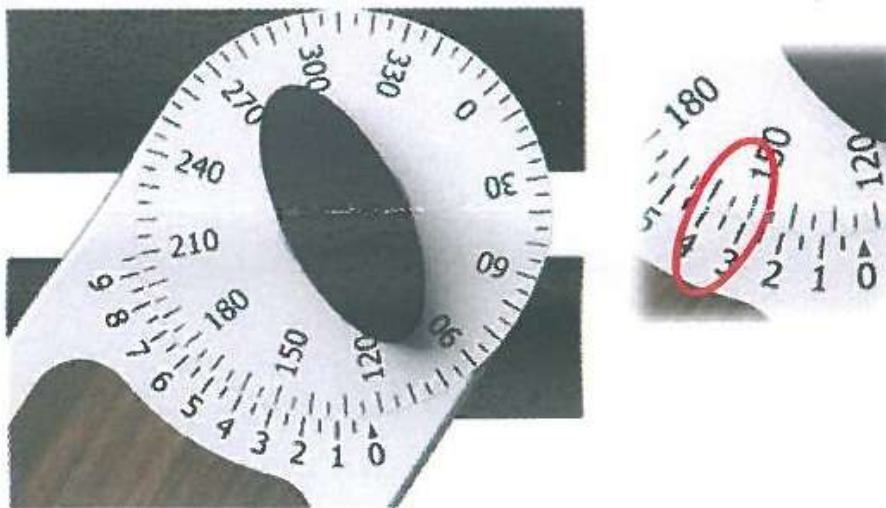
Degrees not divisible by 5 are set/read at the vernier. The vernier is divided into ½ degree increments from 0.5° to 9.5°.

Setting example 113°



For coarse adjustment, move the blade of the bevel so that the zero arrow on the vernier scale points to the nearest degree divisible by 5. In the example of 113° this is either the 110° or 115° on the main scale. For fine adjustment the blade is moved further until the “3” mark on the vernier scale aligns.

Further adjustment example of 123.5°



Move the blade so the zero arrow on the vernier points to 120°, then move until short line (1/2 degree line) between the 3 and 4 aligns exactly opposite the corresponding ½ degree line on the main scale (as shown on smaller picture above).